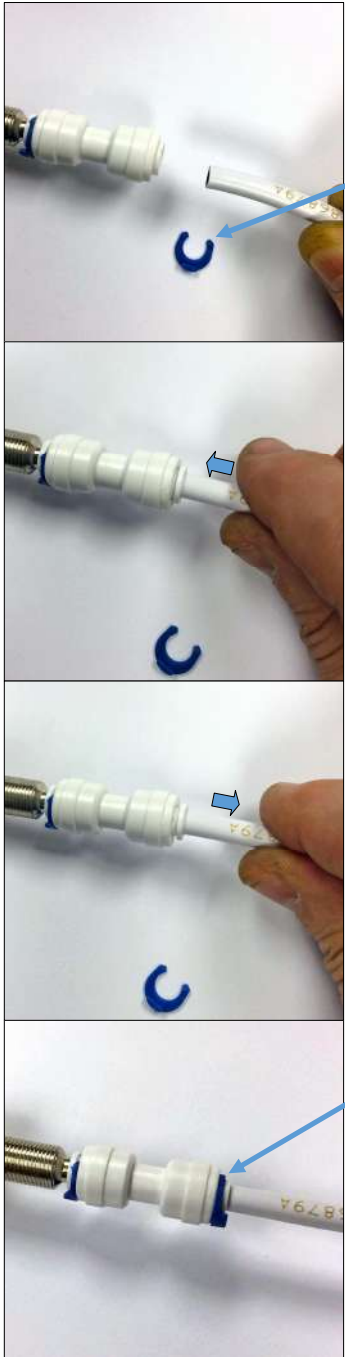


## Push-Fit Instructions



- Cut the hose cleanly and square. No hacksaws, just a sharp knife.
- Firstly remove the blue collet clip from the push-fit.
- No inserts are required on 6mm and 10mm hose.
- Push the hose firmly into the white collet of the push-fit fitting until it stops.
- Pull the hose back out of the white collet to lock it into place.
- Lastly put the blue collet clip in place with the tab facing away from the push-fit fitting.
- To release the hose, firstly remove the blue collet clip and then push the white collet in and simultaneously pull the hose out.

## Orion Mini Tap

